

iQSonar

DATA CENTER DISCOVERY FOR SOFTWARE ASSET MANAGEMENT

The increasingly complex data center environment now accounts for more than 80% of overall software spend. Limited visibility could lead to significant risk and cost exposure in areas such as:

- License Compliance
- Overprovisioning VM's

iQSonar takes Software Asset Management (SAM) into the data center where it sees through layers of virtualization and clustering to make sure you reconcile properly and only pay for the licenses you need.

The depth and scope of iQSonar scanning and data collection will optimize your software license position and ensure you stay up to date for ongoing compliance. Become proactive and mitigate the risk of vendor audits that end in huge penalties, sometimes draining millions from IT budgets and damaging reputations. Out deep and accurate data can be passed on and shared with third-party SAM solutions and operational management tools for powerful insights that provide foundation for continuous software license optimization.

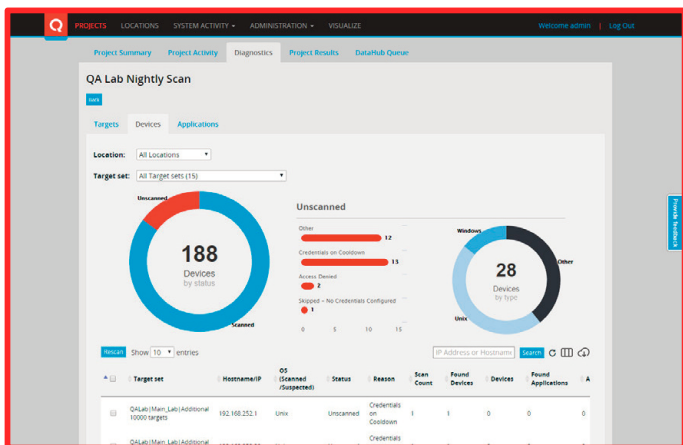
”

Without iQSonar there is no way we could know our licensing position. We now are on top of our IT estate and are able to avoid both under-licensing and over-licensing. We are fully optimized
-SAM Director,
Automotive Industry

ACCURATE DISCOVERY FOR SAM IN THE DATA CENTER IMMEDIATELY ON DEPLOYMENT

KEY BENEFITS

- Save time and resources.
- Perform discovery with minimal manual effort even in large multiple data center locations
- Minimize the risk of human error and missing information when using manual scripts
- Reduce the number of tools required to serve multiple data use cases and vendors
- Minimize the impact of vendor audits
- Reduce performance impact on your environment without additional agents



iQSonar

FEATURES

DISCOVERY

- Discovery of high value infrastructure software assets including database and middleware products from vendors such as Oracle, Microsoft and IBM
- Dynamic deep scanning of database technologies including details on option and pack usage
- Automatic creation of database connection strings
- Discovery of on premise and hybrid cloud virtualization environments including:
 - VMware
 - Hyper-V
 - Oracle VM
 - IBM Power Virtualization
- Agentless. No Temporary agents or third party software
- Uses only protocols made available natively by operating systems and target technology products.
 - SSH, WMI, SNMP, etc.
- Support for all major operating system variants of Windows, Linux and Unix
- Captures a wide range of information, including:
 - Installed Software
 - Running Processes
 - Ports in use by each process, including the remote IP Address
 - Services Running
 - User Configuration
- Project based approach to discovery allowing for focused discovery

DATA INTEGRATIONS

- REST API allows the consumption of data directly by 3rd party systems without the need to understand the underlying data model
- Out of the box integrations into ServiceNow, Ivanti, SNOW, and Aspera

ORACLE DISCOVERY

- Verified by Oracle LMS
- Automated Oracle Server Worksheet
- Oracle Database, Weblogic & iAS
- Automate discovery of
 - Version & Edition
 - Options & Packs (installation usage)
- User & session information
- Deep configuration information
- Deployed applications & components
- Clustering information
- Customize tracking rules to your needs

MICROSOFT & IBM DISCOVERY

- Discovery and deep scanning of Microsoft products: SQL Server instances, Active Directory and Sharepoint Servers
- Discovery and deep scanning of IBM products: DB2, Data Stage, and Websphere among others.
- Version and Edition
- Deployment configuration
- Licenses installed and in use
- User and session information
- Deployed databases and components