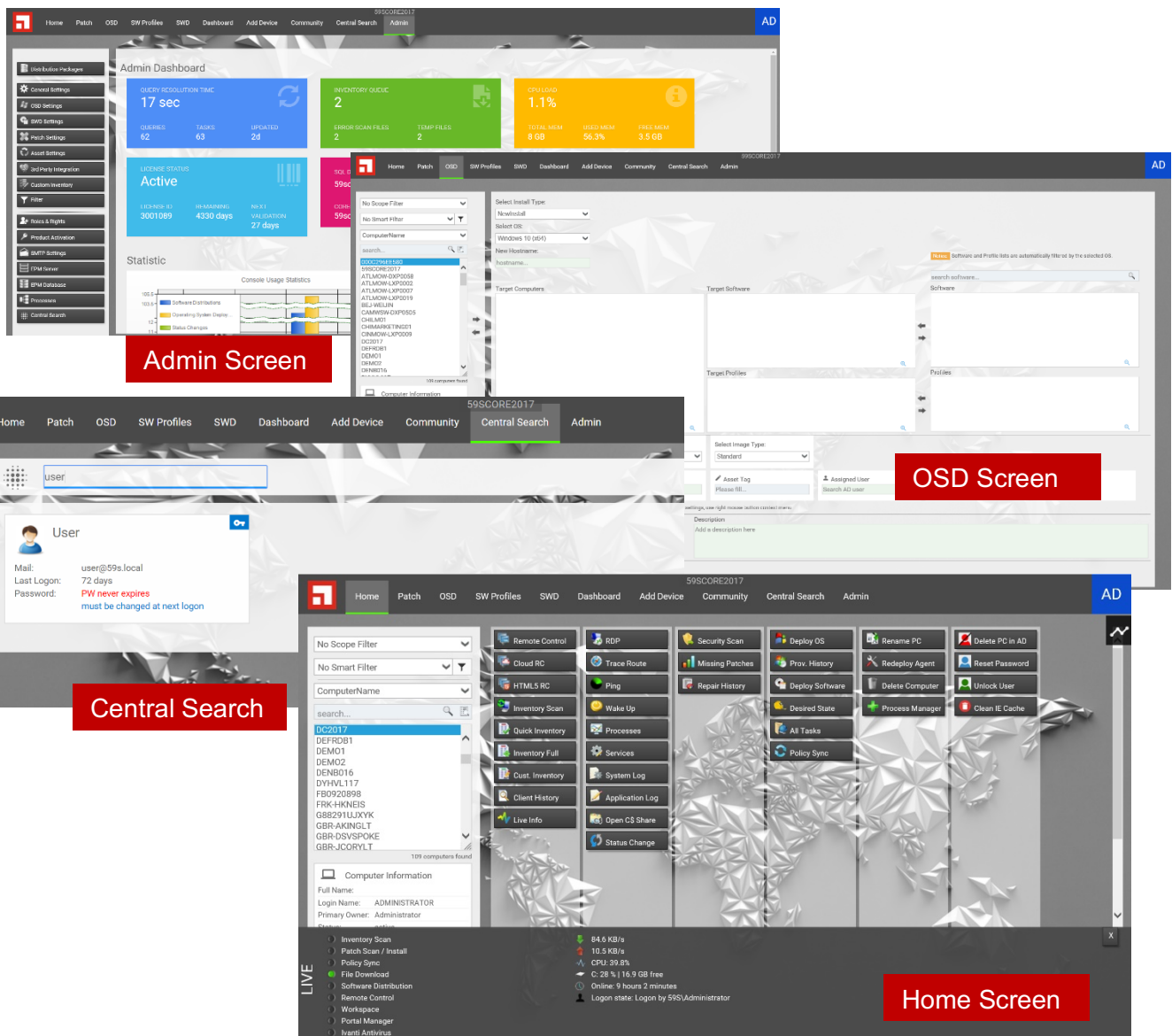


## About five(9)s

five(9)s is a highly qualified technology provider specialized in client management and process design using Ivanti technology. We are one of the largest Ivanti partners in Europe and hold platinum and Ivanti One partner status. Based on our longstanding, in-depth Ivanti knowledge, five(9)s develops unique add-on software for making Ivanti solutions and infrastructures even more efficient for users from all over the world. We run a large team of excellent consultants boasting more than ten years of Ivanti expertise at the highest level.

## Take it easy – the five(9)s Console

Today, many companies are facing the challenges to use a single client lifecycle management (CLM) system across all levels of customer support, in order to secure a process-oriented support workflow across departments. Therefore we have developed a quick and easy-to-use Web console to enable everyone to fulfill CLM tasks by executing customizable workflows using an intuitive interface.



## Features of the five(9)s Console

All in gray highlighted features marked with “Process driven” offer you an out-of-the-box experience on predefined processes using the five(9)s Console. These processes include requester feedbacks by email, task creation, removal and multiple other actions within the Ivanti Endpoint Manager. All build-in processes can be customized by redirecting the workflows to the Ivanti Process Manager.

Page / Feature	Description
<b>Home</b>	
Remote Control Features	Including RC via HTML5 and Ivanti Cloud Service Appliance
Inventory Management	Show Full Inventory, or Inventory Top 30 objects. Create your own Custom Inventory for your devices (e.g. asset-ID, cost center information, HW / SW details).
Provisioning History	Show clients provisioning history.
Client History	Show all changes made to a device by a five(9)s Console user.
Network Connection Tools	Use RDP, Trace Route, Ping and Wake On LAN to check you client availability.
Advanced Inventory	Display and modify your clients processes and services.
Troubleshooting	Show your clients System- and Application Log.
Initiating Scans	Start inventory- and security scans as well as policy syncs on your devices.
Patch Information	Display missing patches and repair history for each device.
Redeploy Agent	Process driven - Reinstall the EPM agent based on the clients former agent configuration with a single click.
Rename PC	Process driven – Rename your devices.
Third Party Integration	Use the Nextthink Finder to evaluate clients health.
Custom Buttons	Create your own role based Feature-Buttons for the five(9)s Consoles Home Screen and open web URLs, or start executables/scripts with parameters from your client inventory like "Device Name", "Login Name", "MAC" and so on.
Live Info	Show live information of your managed device, like running EPM processes (Inventory-, Security Scans, recent downloads), or system information like available Diskspaces.
<b>Patch</b>	
Deploy Patches	Process driven – Select your patch definitions and deploy them by scope in an out-of-the-box patch process with pilot groups and email feedback.
Do Not Scan	Process driven - Move your selected patch definitions to the EPM Patch Managers “Do Not Scan” folder.
Emergency	Process driven - Start an emergency patch deployment without patch approval just by setting your definitions to “Autofix” by scope.
Patch Restore	Process driven - Remove your processed patch definitions from your patch deploy, or emergency processes and reassign new tasks.
<b>OSD</b>	
Operating System Deployment	Process driven - Deploy your operating systems via NewInstall, Clone, or Reinstall function.
Select OS	Define the OS you will offer for deployment on the Admin Page.
Integrated Software Deployment	Add target software and / or target software profiles to your OSD job. The selected software packages will be automatically assigned to your target device.
Customize your OSD Settings	Define your own OSD parameter (e.g. location, OU, and so on) and work with these parameter in your EPM Provisioning Template.
<b>SW Profiles</b>	
Create Software Profiles	Assign your software packages to profiles to deploy multiple packages with a single click. Connect this software profiles with valid operating system versions to avoid incompatibilities.
<b>SWD</b>	
Deploy Software	Process driven – Select target devices and assign software packages, or profiles to this machines via push, or policy with a few clicks. Selectable packages and profiles are filtered by the target devices operating system to avoid incompatibilities.
Desired State Technology	Software packages and profiles are assigned via Desired State technology. This allows you to clone, or reinstall devices based on former installed operating systems as well as software packages.
<b>Add Device</b>	
Add Device	Add devices to your EPM Database using barcode / serial numbers, or MAC addresses. Assign hostnames to these machines and apply a defined status like “Active”, “Reserved”, “Stock”, and so on.

Page / Feature	Description
<b>Admin</b>	
Edit Distribution Packages	Rename your software packages for five(9)s Console view, add vendor URLs to offer further package information, select the allowed operating systems and set package status to "Production" or "Test" to avoid installation of unapproved software.
Multi Software Categories	Use this feature to group your software packages in one or more "Software Categories" on the "Distribution Packages" page. These software categories can now be assigned to different user roles. This allows you to restrict a member of a certain user role to distribute packages that are included in his assigned software category, only. A second level of category validation can be achieved with the "Validate Scope" option. Assign your software packages to a scope of devices and ensure that only members of this scope can be targeted for this packages on the "SWD" page
Link Software Licenses	Link your software licenses created in the EPM Software License Monitoring to your software packages in the five(9)s Console and limit the software installations per package to the amount of licenses you have. Send a warning, or deny software assignments when the amount of licenses is reached.
Maintenance Mode	Set your five(9)s Console to maintenance mode while you are upgrading or patching your EPM Coreserver.
Custom Menu Entries	Define custom menu entries for your five(9)s Console e.g. to refer to some intranet webpages, or additional web-based products.
Custom Inventory	Configure Custom Inventory entries as checkbox, input, or list fields to offer more information about your devices to your IT staff. Custom inventory entries can be modified in Home screen and be used in Add Devices, OSD and Status Change to extend your options while controlling your devices.
Roles & Rights	Define roles and rights for the five(9)s Console to give your IT staff groups dedicated access to features and functions.
Responsive Webdesign	Open the five(9)s Console in your Web-Browser and adjust the window size to your personal needs. The new responsive web design will follow your demands to give you always the best visualization for all of the features. Tipp: Use your Smartphone (or Tablet) connected to your corporate Wi-Fi to accomplish your tasks within the five(9)s Console.